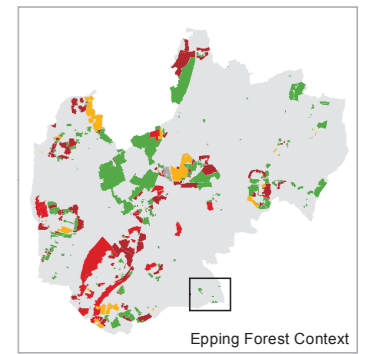


Key

- Epping Forest Local Authority Boundary

Final Headline Assessment

- Deliverable
- Developable
- Filtered
- Not Deliverable or Developable - Not Achievable
- Not Deliverable or Developable - Not Available
- Not Deliverable or Developable - Not Suitable
- Not Deliverable or Developable - Unknown Availability



The SLAA does not allocate land for development or indicate that the Council would support its development. The sites provide a range of potential locations where development might be considered through the plan.

These maps show the emerging headline assessments from the deliverability and interpreted analysis of each site. They should only be interpreted alongside the full SLAA assessment for each site.

Headline site assessments relate to a site in its entirety. Constituent parts of some suitable sites, as per the boundary shown on this map, may not be suitable for development where factors affect only a portion of the site. The capacity of a site to accommodate development has been adjusted in these cases and the headline assessment relates only to the development capacity the SLAA has attributed to the site.

nlp Nathaniel Lichfield & Partners
 Planning, Design, Economics.

Project	Epping Forest SLAA
Title	Deliverability - Stapleford Abbots
Client	Epping Forest District Council
Date	09.05.2012
Scale	-
Drawn by	MAR
Dwg. No	GIS12991-021

Based upon Ordnance Survey mapping with the permission of Her Majesty's Stationery Office. © Crown Copyright reserved. Licence number AL50684A
 GIS Reference: S:\CL12991 - Epping Forest SLAA\CL12991 - Epping Forest SLAA - SLAA Sites (003) - Deliverability - 11.04.2012.mxd